



# Spelthorne Council Economic Development

Tracey Carter - Economic Development Manager

Sheila Kimpton- Senior Economic Development Officer

Andy Willmott - Town Centre Manager

May 2023

# Economic Development Team



Tracey Carter – Economic Development Manager

Andy Willmott – Town Centre Manager  
(Ashford, Sunbury & Shepperton)



Sheila Kimpton – Senior Economic Development Officer

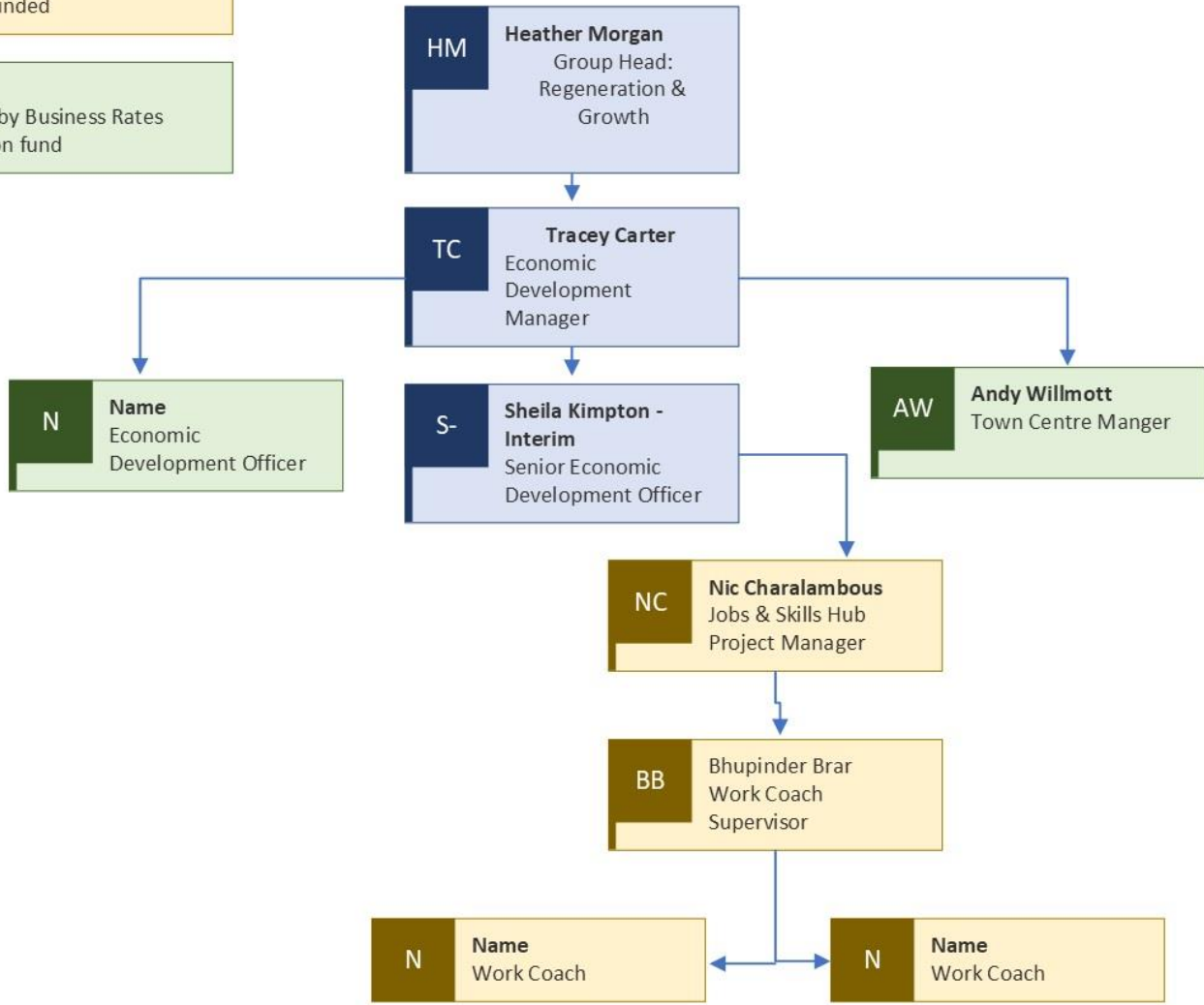
Vacant Post– Economic Development Officer

**Blue**  
Funded from Council revenue

**Orange**  
Grant Funded

**Green**  
Funded by Business Rates  
Retention fund

# Economic Development Team Structure



# National Winners



Spelthorne Council's work supporting the Borough's businesses was honoured at the Federation of Small Businesses (FSB) Local Government Awards in October 2022.

**Awarded All-England winner of the Future Ready category** (support and enable businesses to be prepared for the changing business landscape to mitigate challenges or exploit opportunities in the future.)

**South East Regional winner of the Future Ready category.**

**South East Regional winner of the All Round Small Business Friendly category** (projects which have positively succeeded in supporting and developing the local small business community.)

**Ray Abrahams, Development Manager for the FSB in Surrey, said:** *"I'd like to congratulate Spelthorne on being named the All-England winner in the Future-Ready category and the Southeast regional winner in the All-Round business support category at the FSB Awards, as well as being shortlisted in the Covid support & Recovery and Programme of Business Support categories. The team at Spelthorne have worked incredibly hard over the past 12 months to support local businesses and can take pride in their efforts in the knowledge that their work is recognised alongside the best in the country. I look forward to seeing the next steps they take in supporting businesses."*

## Some feedback from local businesses:

*“I’ve been doubly blessed by Spelthorne, having received both a grant for some new audio equipment for my studio and now for the creation of a new website. The former has already really helped my voiceover business and I’m sure the latter will too, once it’s complete. I’ve told a number of people about the way you’ve supported me, and how Spelthorne really does have a passion for helping small businesses. Everyone’s reaction has been much the same: 1, they can’t believe it and 2, they wish their local borough had the same outlook! I expect that both your roles are probably rather thankless at times, so I just want to say... thank you.”*

*“I would love to have a stall at your event and tell people how much help I received to get my small business running. I first started through the business enterprise scheme while on income support and have since received an equipment grant to buy my mobile massage van. I started from nothing and despite covid am still doing well and growing. I would love the opportunity to give something back to you for all your help and ongoing support, of which I am very thankful. If you would like to see what I do, I have nearly forty 5\* reviews from the people I have helped in our community.”*

*“We just wanted to drop you a message to say a massive thank you to you and your team for helping us. Whilst we still face many challenges with costs, we have now at least the opportunity to follow our road map to becoming a successful business. Our goal to fly the green flag and promote healthy living is very much alive which would not have been the case without the help of Economic Development Team.”*

*“We started off in Christ Church where we shared the kitchen, the church were extremely kind to us but we knew we had to move on and have our very own kitchen to grow. We managed to obtain loans to purchase our new kitchen but then hit a financial wall when it came to purchasing equipment and at that point the business would have been dead without the support of your team. Your whole team were magnificent and always incredibly helpful.”*

# Economic Prosperity Strategy 2023 - 2028

Four 'theme' areas emerge from the Council's assessment of the economy and the 'actions' under each 'theme' will help to implement the 'vision'. The 'themes' are: -

- **Growth & Competitiveness** - *Spelthorne to become a stronger economy through a range of initiatives including access to training and business coaching*
- **People** - *More quality jobs and greater earning power as well as enhanced access to skills via the Apprenticeship Levy gifted to small businesses.*
- **Infrastructure & Places** - *To complete and deliver the Local Plan and Staines Development Framework to make best use of our assets including Bridge Street carpark, Thameside House and Ashford multistorey carpark.*
- **Supporting Business** - *To provide one of the best mechanisms of business support in Surrey via the Economic Development Team and the best place to start and grow a business*

# Business Support & Services

- Spelthorne Business Hub / Incubator
- Spelthorne Jobs& Skills Hub
- Spelthorne Business Awards
- Spelthorne Business Forum
- Spelthorne Business Plan Competition
- Town Centre Manager
- 121 Business Coaching
- Digital Media Training
- FSB Membership
- Startup Club
- Start your business in Spelthorne book
- Website Provision
- Networking Events
- Business Skills workshops
- Jobs Fairs
- Chose Spelthorne Website
- Visitor Economy Forum
- Business Costs Reduction Clinics
- Buy Local campaign
- Support Business Improvement District
- Key Account Management
- Town map / info totem poles
- Apprentice Levy Gifting Scheme

# Spelthorne Business Forum



## Driving Membership and Community:

Local business owners possess an unparalleled understanding of the unique challenges and opportunities within their geographic areas.

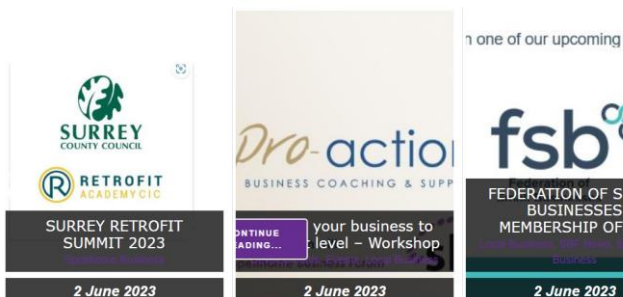
Engaging with SBF allows them to harness this knowledge and influence others to join the community. By actively participating in SBF events, sharing success stories, and showcasing the tangible benefits of membership, these business owners become ambassadors who attract fellow entrepreneurs seeking to grow their businesses.

Their engagement instils a sense of unity and camaraderie, transforming SBF into a vibrant hub where local businesses can thrive collectively.

With over 900 members, the SBF is the largest local collective business voice in Surrey with members from business of all sizes and sectors.



Welcome to the Spelthorne Business Forum News Articles Feed  
Use the search function to find specific topics. [Reset View](#)



## Join SBF

Your business can only benefit by being a member of Spelthorne Business Forum

If you would like a quick how-to guide about "How To Become An SBF Member", please click on the video on this page.

If you have any problems, please email [membership@spelthornebusinessforum.uk](mailto:membership@spelthornebusinessforum.uk).



Simply pop your details into the registration form below, create a password and we will send you an email to confirm your account. Once activated, please login, visit the menu in the top left and edit your profile, this will then allow you to create a Company Profile which will then appear in the





# Spelthorne Business Hub

The first ever Business Incubator in Spelthorne formally opened 11 June 2021 by Kwasi Kwarteng MP.

The Incubator, to be known as the Spelthorne Business Hub is run in partnership with by CoTribe CIC Ltd and provides a co-working environment for start-up companies, young entrepreneurs, and businesses, alongside an exciting programme of business support. Located in offices owned by Spelthorne Council on Hanworth Road, Sunbury-on-Thames this site benefits from the excellent transport links that connect the Borough to London, the South East and beyond.

The Spelthorne Business Hub provides a creative base for entrepreneurs to develop their ideas and grow their businesses and -offer a vibrant environment for businesses to turn an innovative spark into a strong commercial enterprise.

We also deliver a wide range of workshops, seminars, and events for the wider Spelthorne business community to take advantage of. When a business develops and outgrows the Incubator, they will then be supported in finding their next business location within the Borough.

Co-Working



Hot Desks



Fixed Desks



Private Offices



Meeting Rooms



A comprehensive programme of business support all under one roof in Sunbury Upon Thames.

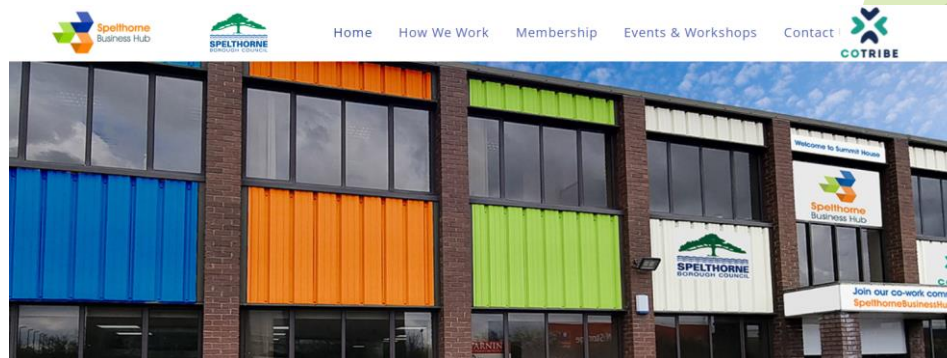
Are you a new enterprise looking for a business community to help you take shape?

Are you an existing business which would benefit from somewhere central to meet clients or to grab a quiet desk?

Is your business ready to move to the next level with expert support?

Join CoTribe Business Incubator at the Spelthorne Business Hub on Hanworth Road in Sunbury Upon Thames and take advantage of competitive rates, flexible terms and outstanding support.

Located in **Sunbury Upon Thames** right next to junction 1 of the M3 our new incubator space is easily accessible from the M25, M3, M4, A316 and Sunbury Railway Station and is situated 15 minutes from Heathrow.



# Spelthorne Business Awards

The Spelthorne Business Awards are made up of 17 categories spanning a range of industries and business sectors with one overall winner crowned Spelthorne Best Business of The Year.

The Spelthorne Business Awards is a fantastic opportunity to celebrate the very best and brightest businesses in Spelthorne and there is a category for every business, no matter how big or small, how new or old, a one man band or business with 50 plus employees!

Entries are open until September and culminates in a special black tie awards ceremony on Friday 24 November 2023 at the Hazelwood Centre/London Irish in Sunbury where the winners will be announced.

This prestigious event is a fantastic opportunity to celebrate business successes after a few incredibly hard years. Previous finalists have experienced a boost in brand awareness as well as increased credibility in the marketplace.



**SPELTHORNE  
BUSINESS AWARDS 2023**

Recognising the hard work and achievements of local businesses. Showcasing the "best of the best" with awards in the following categories:

- Overseas Trader of the Year Award**  
sponsored by Heathrow Airport
- Creative / Innovative Business Award**  
sponsored by Netflix
- Construction and Property Award**  
sponsored by Berkley Homes
- Healthy Business Award**  
sponsored by Everyone Active
- Best Franchise of the Year Award**  
sponsored by McDonalds
- Best Small Business Award**  
sponsored by Federation of Small Business
- Best Sustainable Business of the Year Award**  
sponsored by Sustainable²
- Best Corporate Social Responsibility Award**  
sponsored by Worldwide Energy Logistics
- Best New Start Up Award**  
sponsored by Kwasi Kwartang MP
- Community Service Provide of the Year**  
sponsored by A2 Dominion
- Best Hospitality and Leisure Business Award**  
sponsored by Shepperton Marina
- Retail Excellence Award**  
sponsored by Sytner Land Rover

[www.spelthorne.gov.uk/SBA](http://www.spelthorne.gov.uk/SBA)



# Spelthorne Business Plan Competition

The Spelthorne Business Plan Competition represents a search for the local business entrepreneurs of tomorrow. Participants are asked to think of a business idea and answer our online question form. The six best entries will then create a business plan to present to a panel of expert judges at a 'Dragon's Den' style final hosted at a venue in Spelthorne to be announced.

## Prizes

The winner will receive £3,500 deposited into a business bank account, and a package of mentoring and support to help them bring their business ideas to life. They will also receive free website and logo design. Runners up will receive £1,000. Third placed will receive £200.



The Spelthorne  
Business Plan Competition | 2022

**ONE GREAT  
IDEA WINS £3,500**

[www.spelthorne.gov.uk/businesscomp](http://www.spelthorne.gov.uk/businesscomp)



# Spelthorne Jobs & Skills Hub

As a result of the successful pilot Youth Hub scheme, the Spelthorne Jobs & Skills Hub has launched in January 2023 as a service dedicated to all Spelthorne residents to support them in finding suitable work, training or education.

No matter what age you are or what stage you are at in life you can visit the hub to receive support and guidance to help you tackle challenges and barriers as well as gain confidence and skills to help you move forward with your work or education goals.



**YOUTH hub**  
skills & opportunities for ages 16-24

**SPELTHORNE JOBS & SKILLS HUB**

**PROJECT PLAN**

BY TRACEY CARTER  
ECONOMIC DEVELOPMENT MANAGER  
SPELTHORNE BOROUGH COUNCIL



# Choose Spelthorne Website

## Why Choose Spelthorne

Spelthorne is a great place to do business. Spelthorne offers a wealth of opportunities for developing your business on major commercial sites, smaller industrial estates, rural business parks and town developments.

## ocused on Business Development

Fast & efficient access to Heathrow, Central London and vibrant international businesses

is perfectly positioned in the north of Surrey and to the south-west of London. Our prime location and transport links by road, rail and air make it the best connected borough in Surrey with easy access to both domestic business hot-spots and foreign export markets.

## Living in Spelthorne

A high quality of life is an important feature of a local economy. In 2020 the Office for National Statistics report showed that Spelthorne was voted as the "Happiest place to live" in Surrey. Twelve miles of the River Thames (more than any other London borough) runs through Spelthorne and there are many parks, open spaces, leisure attractions, pubs and restaurants in and around the area.



## Skills & Employment

At Spelthorne Council, we are committed to helping residents to find suitable employment that can offer them the skills and stability long term that they need. Here you can find information on training, workshops business start-up advice, employment & recruitment for businesses.

## Business Support

There are a range of organisations that provide support to businesses covering services such as advice, training and networking opportunities for businesses in the areas.



SHEPPERTON TOWN

29 September, 2021 | Spelthorne, Towns



STAINES UPON THAMES

29 September, 2021 | Spelthorne, Towns



SPELTHORNE BOROUGH

9 August, 2021 | Spelthorne, Towns



SUNBURY ON THAMES



ASHFORD TOWN



COMMERCIAL PROPERTY